

MONTHLY MEMBERSHIP PROGRESS REPORT

District 32 C

Results as of: 4/30/2026

GMT:

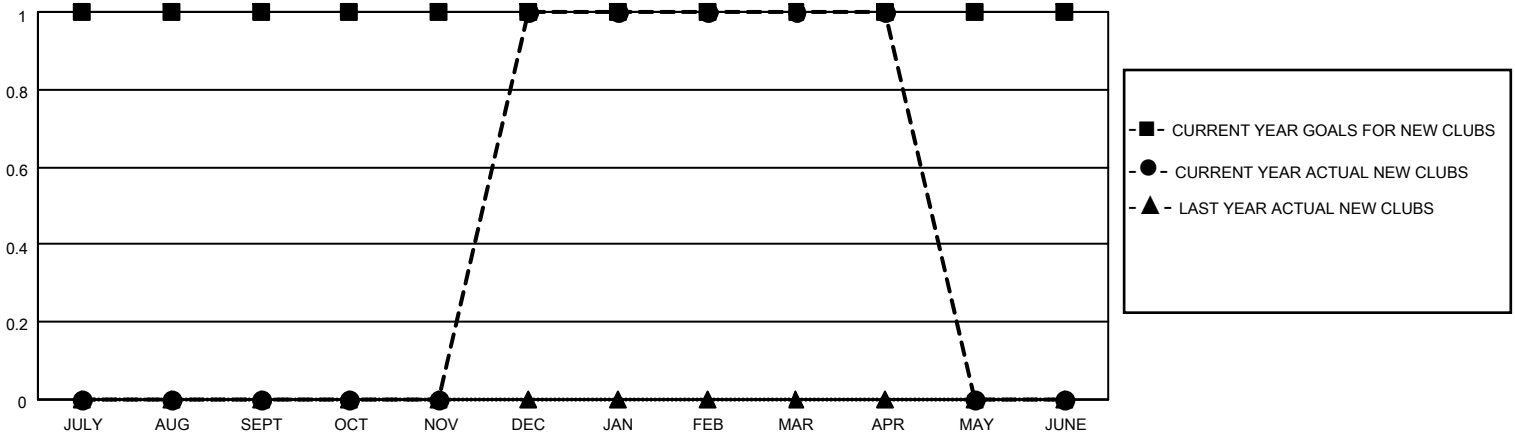
LOCATION SOUTH CAROLINA

GMT CA

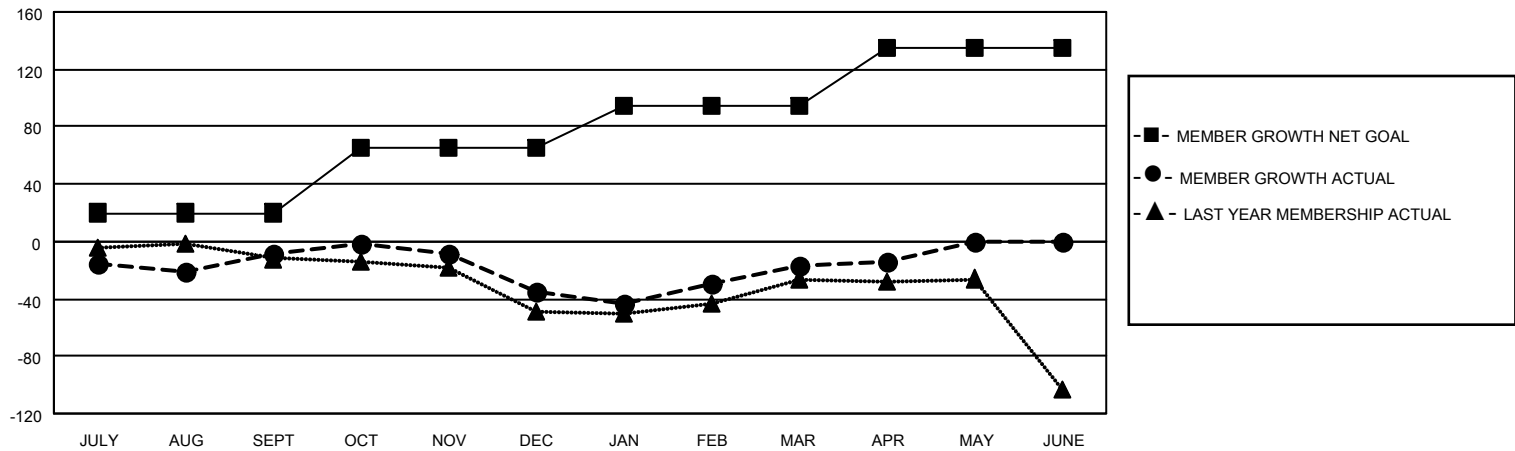
Clubs			
RESULTS FOR 2025-2026			
QUARTER	NEW CLUB GOAL	NEW CLUBS	DROPPED CLUBS
JULY/AUG/SEPT	1	0	1
OCT/NOV/DEC	0	1	1
JAN/FEB/MAR	0	0	0
APR/MAY/JUNE	0	0	0

Members			
RESULTS FOR 2025-2026			
QUARTER	MEMBER GROWTH NET GOAL	MEMBER GROWTH ACTUAL	DROPPED MEMBERS ACTUAL (including transfers)
JULY/AUG/SEPT	20	43	36
OCT/NOV/DEC	45	60	80
JAN/FEB/MAR	30	73	40
APR/MAY/JUNE	40	17	13

GOALS AND ACTUAL NEW CLUBS CUMULATIVE



GOALS AND ACTUAL MEMBERS CUMULATIVE



DROPPED CLUBS: 2	31 CLUBS OF 55 ADDED 1 OR MORE NEW MEMBERS	<u>GENDER DISTRIBUTION</u>	
<u>DROPPED MEMBERS</u>		MALE	854 (64.16%)
DECEASED	16	FEMALE	477 (35.84%)
CLUB CANCELLED	9	TOTAL FAMILY UNIT MEMBERS	
OTHER	143	268	
TOTAL	168	FAMILY MEMBERS PAYING HALF DUES	
		134	

[CLICK HERE FOR CUMULATIVE MEMBERSHIP DATA](#)